

Three plunger pumps Triplex

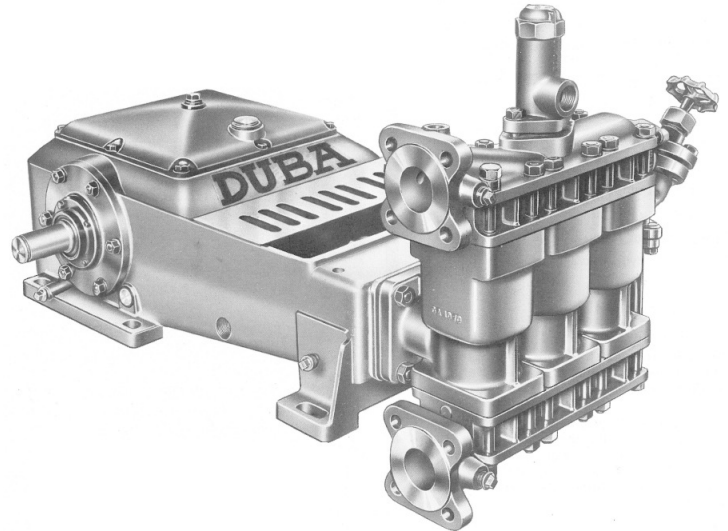


Types 60, 75, 75R & 60.3T

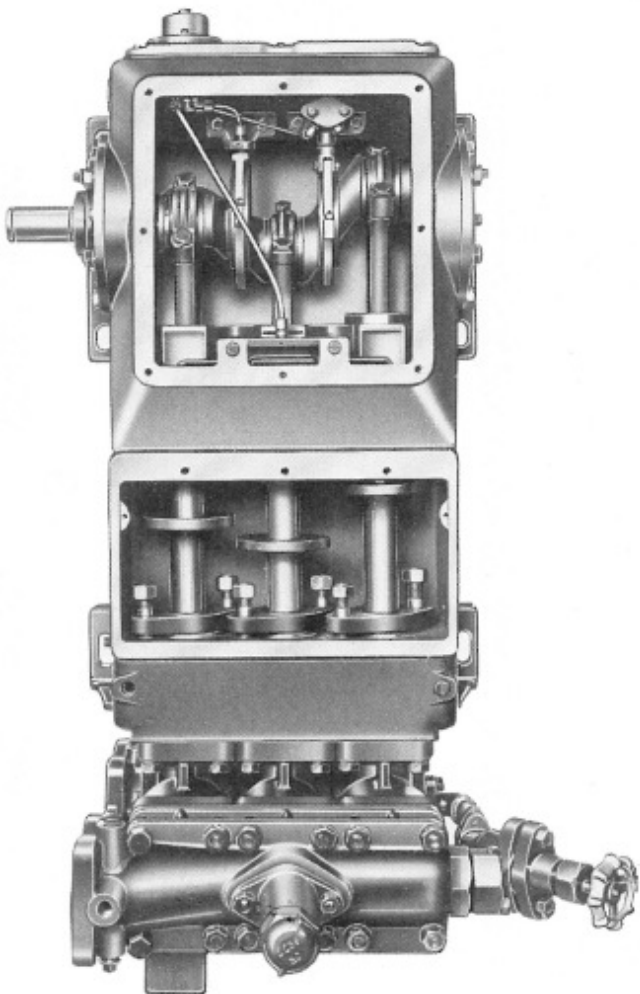
Applications:

- Boiler feed pumps
- Jet condensation pumps
- Test pumps for receivers and systems
- Charging of hydraulic accumulators
- Hydraulic press units
- Chemical industries
- Petro-chemical industries
- As rining unit for: food industries, paper mills, shipyards, foundries, waste water systems, etc.

The large possibilities of using different materials and forms for the pumphouses, plungers, valves and stuffing boxes permit to solve the most different problems as far as pressures, temperatures and nature of liquid is concerned.



Description and materials in standard construction



1. Mechanism

Crankshaft:

- o Nodular cast iron or steel
- o Tapered roller bearings

Connecting rods:

- o Nodular cast iron
- o Bearing bushes of tri-metal

Lubrication:

- o Pump mounted on crankshaft, connecting rods are pressure lubricated
- o Splash lubrication on tapered roller bearings
- o Filter on suction to protect pump, filter on delivery side as well
- o Immediate control of oil pressure
- o Mechanism and hydraulic part are separated by large and easily accessible space where packing and screens are placed

2. Hydraulic part

Plungers: stainless steel

Valves: tandem type in stainless steel

Pump house: cast iron, nodular cast iron, steel or stainless steel

Packing: adapted to working circumstances

All those parts can be modified and adapted to meet special requirements.

Stuffing boxes can be cooled, even on standard pumps.