

Piston pumps for domestic use

Type DB



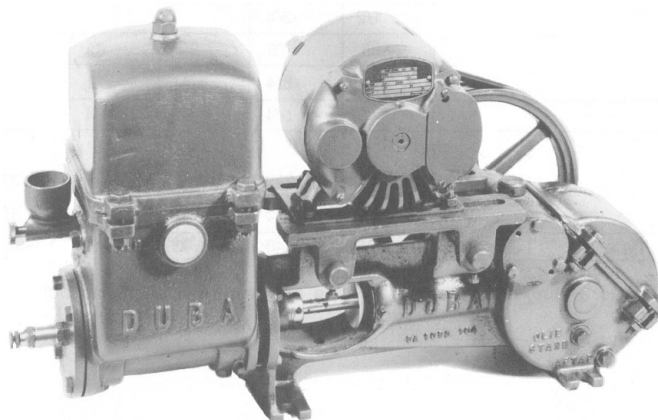
Pumps for pumping water from wells

Construction:

- Double – acting piston pump
- Self – priming
- Splash – lubrication

Materials:

Pump casing	: cast iron
Driving axles	: steel
Connecting rod	: nodular cast iron
Piston rod	: stainless steel
Piston	: leather
Cylinder liner	: bronze
Valves	: rubber
Springs	: bronze



Slowrunning:

TYPE	DB 1600	DB 2100	DB 2600	DB 3100	DB 4400	DB 5400	DB 6200	DB 7100
Capacity [l/h]	1600	2100	2600	3100	4400	5400	6200	7100
Motor power [kW]	0,37*	0,37*	0,55*	0,55*	0,75	1,1	1,5	1,5
Speed [c/min]	65	87	73	88	68	80	66	75
Suction [mm]	1	1	1 1/4	1 1/4	2	2	2	2
Disch [mm]	1	1	1 1/4	1 1/4	1 1/2	1 1/2	1 1/2	1 1/2
diameter								
pumpulley [mm]	240	240	290	290	370	370	330	330
motorpulley [mm]	55	75	75	90	85	105	80	90
Drive N° & Type	1 x Z35	2 x Z35	2 x A40	2 x A40	2 x A52	2 x A52	3 x A49	3 x A49

* mono or three phase ; pressure: 1,5 to 3 bar, 4 bar on demand

Fastrunning

TYPE	DB 1000	DB 160	DB 220
Capacity [l/h]	1000	1200	1500
Motor power [kW]	0,37*	0,37*	0,37*
Speed [c/min]	275	284	397
Suction [mm]	1	1	1
Disch [mm]	1	1	1
diameter			
pumpulley [mm]	237	225	225
motorpulley [mm]	45	40	63
Drive N° & Type	1 x Z35	1 x Z35	1 x Z35

* mono or three phase ; pressure: 1,5 to 3 bar, 4 bar on demand

Boilerfeed – steam generators – Water boosting

TYPE	KDB 40	KDB 200				KDB 300		
Capacity [l/h]	600	800	1200	1500	2000	2500	3000	3500
Motor power [kW]	0,37	0,75	0,75	1,1	1,5	2,2	2,2	2,2
Speed [c/min]	87	40	50	72	80	62	75	75
Suction [mm]	1	1 1/4	1 1/4	1 1/4	1 1/4	1 1/2	1 1/2	1 1/2
Disch [mm]	1	1 1/4	1 1/4	1 1/4	1 1/4	1 1/2	1 1/2	1 1/2
diameter								
pumpulley [mm]	237	355	355	355	355	322	322	322
motorpulley [mm]	75	50	63	90	100	71	85	85
Drive N° & Type	2 x Z35	2 x A52	2 x A52	2 x A52	2 x A52	3 x A49	3 x A49	3 x A49