

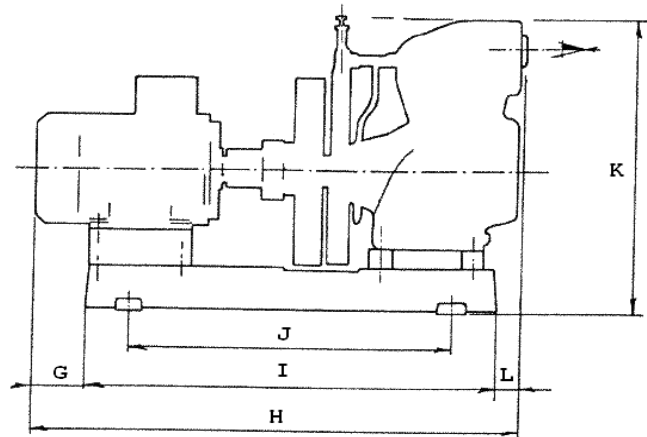
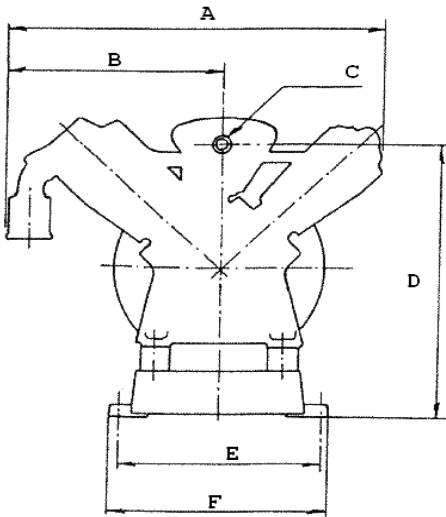
# TWO STAGE AIR COOLED COMPRESSOR

## TYPE **DBD** 10.4,5/6N

### DATASHEET



#### 1. Dimensions:



A:	730	mm	D:	595	mm	G:	120	mm	J:	700	mm
B:	440	mm	E:	415	mm	H:	1030	mm	K:	680	mm
C:	1" G		F:	450	mm	I:	900	mm	L:	10	mm

#### 2. Characteristics and taken power @ 1450 rpm

Number of cylinders :	2					
Bore :	100/45	mm				
Stroke :	60	mm				
Suction connection :	50	mm				
delivery connection :	3/4"	inch				
Max. speed :	1450	rpm				
Displacement :	41	m <sup>3</sup> /h				
Number of stages :	2					
Pressure :	16	bar	Q	N		
	20	bar	33,2	4,8	m <sup>3</sup> /h	kW
	25	bar	32,6	5	m <sup>3</sup> /h	kW
	30	bar	31,5	5,3	m <sup>3</sup> /h	kW
			29,5	5,6	m <sup>3</sup> /h	kW
Weight :	123	kg				

*Q is effective calculated in suction conditions (free air) (+/- 5%)*